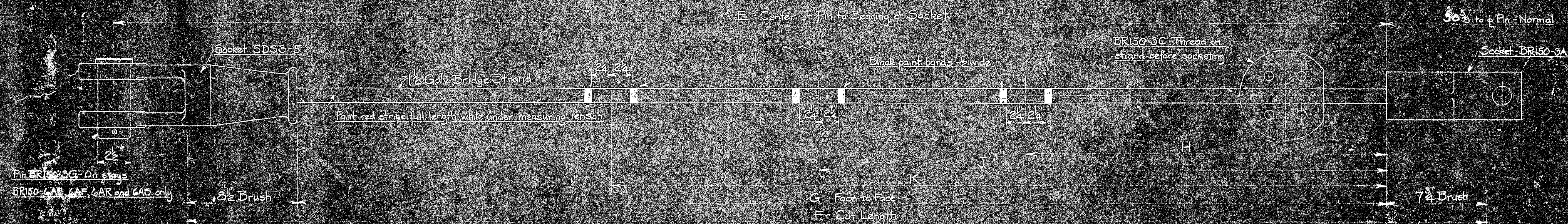




MARK	NR REQD	LOCATION	A	B	C	D	MARK	NR REQD	LOCATION	A	B	C	D
BR150-6A	4	L2-U3	28-5 $\frac{1}{2}$	28-8 $\frac{1}{2}$	27-3 $\frac{1}{2}$	—	BR150-6K	4	L32-U31	26-7 $\frac{1}{2}$	26-10 $\frac{1}{2}$	25-5 $\frac{1}{2}$	—
BR150-6B	4	L3-U4	31-1 $\frac{1}{2}$	31-4 $\frac{1}{2}$	29-1 $\frac{1}{2}$	12-3 $\frac{1}{2}$	BR150-6L	4	L31-U30	28-6 $\frac{1}{2}$	28-9 $\frac{1}{2}$	27-9 $\frac{1}{2}$	11-1 $\frac{1}{2}$
BR150-6C	4	L4-U5	34-8 $\frac{1}{2}$	34-11 $\frac{1}{2}$	33-5 $\frac{1}{2}$	4-4	BR150-6M	4	L30-U29	31-3 $\frac{1}{2}$	31-6 $\frac{1}{2}$	30-1 $\frac{1}{2}$	12-7 $\frac{1}{2}$
BR150-6D	4	L5-U6	35-0 $\frac{1}{2}$	33-3 $\frac{1}{2}$	37-10 $\frac{1}{2}$	16-8 $\frac{1}{2}$	BR150-6N	4	L29-U28	35-2 $\frac{1}{2}$	35-5 $\frac{1}{2}$	34-0 $\frac{1}{2}$	14-8 $\frac{1}{2}$
BR150-6E	4	L6-U7	44-4 $\frac{1}{2}$	44-7 $\frac{1}{2}$	43-1 $\frac{1}{2}$	19-4 $\frac{1}{2}$	BR150-6P	4	L28-U27	40-2 $\frac{1}{2}$	40-5 $\frac{1}{2}$	39-0 $\frac{1}{2}$	17-3 $\frac{1}{2}$
BR150-6F	4	L7-U6	36-6 $\frac{1}{2}$	36-9 $\frac{1}{2}$	35-4 $\frac{1}{2}$	19-6 $\frac{1}{2}$	BR150-6R	4	L27-U26	37-9 $\frac{1}{2}$	38-4 $\frac{1}{2}$	36-7 $\frac{1}{2}$	20-5 $\frac{1}{2}$
BR150-6G	4	L6-U5	32-4 $\frac{1}{2}$	32-7 $\frac{1}{2}$	31-2 $\frac{1}{2}$	17-5 $\frac{1}{2}$	BR150-6S	4	L28-U29	33-5 $\frac{1}{2}$	33-8 $\frac{1}{2}$	32-8 $\frac{1}{2}$	18-3 $\frac{1}{2}$
BR150-6H	4	L5-U4	29-1 $\frac{1}{2}$	29-4 $\frac{1}{2}$	27-1 $\frac{1}{2}$	5-10 $\frac{1}{2}$	BR150-6T	4	L28-U30	30-0 $\frac{1}{2}$	30-3 $\frac{1}{2}$	28-10 $\frac{1}{2}$	16-0 $\frac{1}{2}$
BR150-6J	4	L4-U3	26-9 $\frac{1}{2}$	27-0 $\frac{1}{2}$	25-8 $\frac{1}{2}$	4-10 $\frac{1}{2}$	BR150-6U	4	L30-U31	27-7 $\frac{1}{2}$	27-10 $\frac{1}{2}$	26-5 $\frac{1}{2}$	15-9 $\frac{1}{2}$



MARK	N ^o REGO	LOCATION	E	F	G	H	J	K	MARK	N ^o REGO	LOCATION	E	F	G	H	J	K
BRISO-GAA	4	L7-U9	75.9%	75.7%	74.2%	30.6	32.5%	—	BRISO-GAL	4	L27-U25	69.4%	69.8%	69.4%	27.0%	47.1%	—
BRISO-GAB	4	L8-U10	81.0%	81.0%	80.4%	15.1%	32.0%	57.0%	BRISO-GAM	4	L26-U24	75.3%	75.3%	74.1%	12.3%	30.8%	52.3%
BRISO-GAC	4	L9-U11	82.5%	82.7%	81.3%	15.6	37.2%	65.5%	BRISO-GAN	4	L25-U23	82.0%	82.2%	80.1%	14.0%	34.1%	60.3%
BRISO-GAD	4	L10-U13	120.0%	120.0%	121.8%	17.3%	40.1%	81.2%	BRISO-GAP	4	L24-U21	114.3%	114.7%	119.3%	18.8%	48.0%	75.2%
BRISO-GAE	4	L11-Tower	223.5	223.7	224.2%	32.8%	75.0%	110.1%	BRISO-GAR	4	L23-Tower	211.7%	211.9%	210.5%	30.1%	69.7%	102.3%
BRISO-GAF	4	L13-Tower	183.3%	183.1%	182.7%	44.4%	72.3%	—	BRISO-GAS	4	L21-Tower	172.5%	172.7%	171.2%	42.1%	67.3%	—
BRISO-GAG	4	L13-U10	96.5%	96.1%	95.7%	32.8%	57.1%	82.1%	BRISO-GAT	4	L21-U24	102.5%	102.5%	101.8%	42.0%	60.9%	86.1%
BRISO-GAH	4	L11-U9	70.6%	70.8%	69.3%	17.1%	33.9%	57.0%	BRISO-GAU	4	L23-U25	74.5%	74.6%	73.2%	18.4%	42.2%	60.5%
BRISO-GAI	4	L10-U8	65.7%	65.9%	64.5%	18.6%	37.4%	53.6%	BRISO-GAY	4	L24-U26	69.0%	69.2%	67.1%	19.9%	39.7%	56.5%
BRISO-GAK	4	L3-U7	61.6	61.9%	60.4%	17.1%	35.5%	—	BRISO-GAW	4	L25-U27	64.5%	64.8%	63.4%	19.3%	37.6%	—

PAIN - sockets one shop coat and
lead after socketing.

222		MARK		REQ'D	MAT'L	REQ. NO.	NAME		PROJECT	
BILL OF MATERIAL										
JOHN A. ROEBLING'S SONS CO., TRENTON, N. J.										
		END	Lengths changed		3-11-44		DEER HOLE BRIDGE REINFORCEMENT			
		END	Stays removed from bay 2		5-5-44					
		END	Pin changed from 3/8" to 5/8"		3-1-44					
BR150-14		Tower Top Connection		BY		Approval Date Added	3-11-44		DATE	
BR150-12		Assembly of Stays to Cable Bands		ALL REVISIONS						
BR150-11		Assembly of Longitudinal Stays								
BR150-10		Cable C/O Locations								
BR150-3		Socket Details								
DWG. NO.		TITLE		APPROVED		SCALE		SERIAL		SHEET
		REFERENCE DRAWINGS		ROBINSON AND STEINMAN		1" = 20'		BFR 150		6
				MARCH 16, 1944		DES BY				
				CH. DR.		2-2-44				
				ENG'R.		TR				
						CH				

